



Solid, simple and smart:
advanced reliability in compressed air

MSM 5.5 - 15 KW



K M A R K

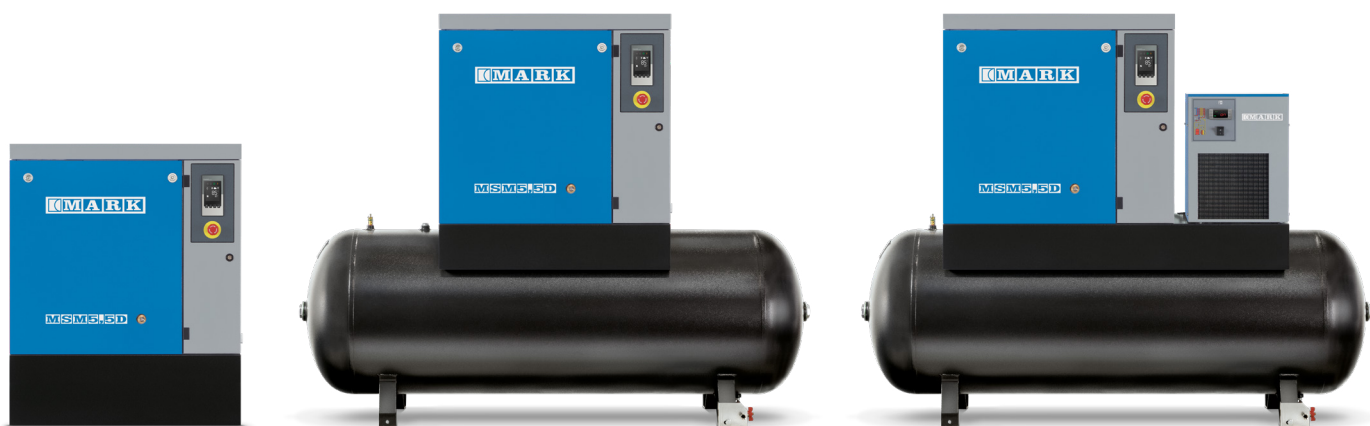
MSM 5.5 - 15 kW

Solid, simple and smart

Compressed air drives most of the businesses, consequently choosing the right compressor is one of the most important decisions your company can make. Our MSM range is a robust and reliable belt driven oil-injected screw compressor - a first-class product that can be easily equipped with an air receiver, a refrigerant dryer, pre filter, offering you a compact and complete solution for your business.

The MSM legendary reputation was built throughout the years based on MARK's constant investment in new technologies and quality improvement, being today a safe choice that you will never regret.

Bring fresh air into your company and enjoy the performance, simplicity and the reliability that only MARK can offer.



Optional and standard features

DESCRIPTION	Factory	Sales
OIL 8000H	✓	✗
FOOD GRADE OIL10	✓	✗
270L AIR RECEIVER	✓	✗
500L AIR RECEIVER	✓	✗
270L AIR RECEIVER + REFRIGERANT DRYER	✓	✗
500L AIR RECEIVER + REFRIGERANT DRYER	✓	✗
270L AIR RECEIVER + REFRIGERANT DRYER + PRE FILTER	✓	✗
500L AIR RECEIVER + REFRIGERANT DRYER + PRE FILTER	✓	✗
TIMER DRAIN ON AIR RECEIVER	✓	✗
STIRRUPS FOR TRANSPORT	✓	✗
WOODEN CRATE	✓	✗

✓ = available ✗ = not available



User benefits

A Complete Solution

- Very compact all in one design
 - Base mounted unit requires less than a square meter
 - Available on air receiver
 - Also with dryer and filters if needed
- Full protected for transport
- No special foundation required
- Very low vibration and noise level
 - Easily installed inside the workshop, very close to the air usage point

Legendary reliability

- Robust and reliable design
- Built with first-class components
- New generation of rotary screw element allows you to work on 100% continuous duty cycles and very hard working conditions
- An oversized ventilation ensures low internal temperatures, making your compressor live better and longer
- The complete unit is designed to operate at ambient temperatures up to 46° C/ 115° F

Easy Maintenance and Accessibility

- All service components located at the front of the machine for excellent accessibility
- All service components strategically located for excellent accessibility
- Oil-level sight glass at the front, visible without removing any panel
- Easy and quick check thanks to the controller
- Service and cleaning is a one person job

Cost Efficiency

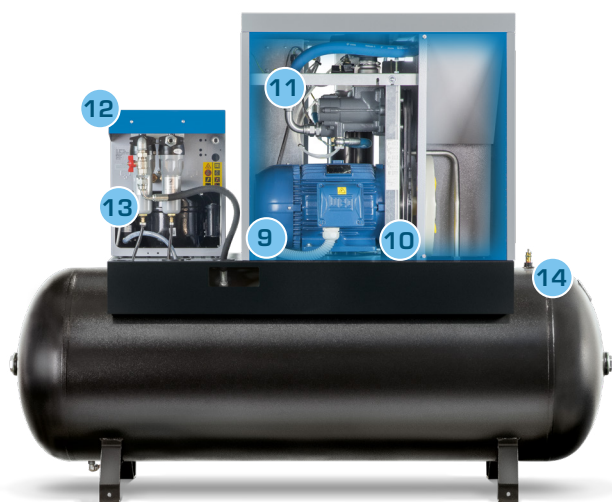
- Reliable design
- Low maintenance costs
- Long service intervals
- Low energy consumption, thanks to reputed IE3 Motors and advanced screw compressor element
- High performing lubrication and cooling systems

MSM 5.5 - 15 kW

Easy to use, efficient and reliable, the MSM range meets the compressed air demands of tire shops, paint shops, car dealers, maintenance shops, small industries in general. Quiet by design, the MSM can be installed almost anywhere in the workshop, without disturbing your working environment. Base mounted or tank mounted, with or without dryer and filter, the MSM is a complete solution for your business.



Components



- | | | |
|------------------|--------------------------------|-----------------------|
| 1 Controller | 6 Oil separator vessel | 11 Compressor element |
| 2 Emergency stop | 7 Oil filter and oil separator | 12 Refrigerant dryer |
| 3 PDP controller | 8 Oil level sight glass | 13 Pre filter |
| 4 Dryer switch | 9 Electric motor | 14 Safety valve |
| 5 Oil cooler | 10 Belt drive system | |



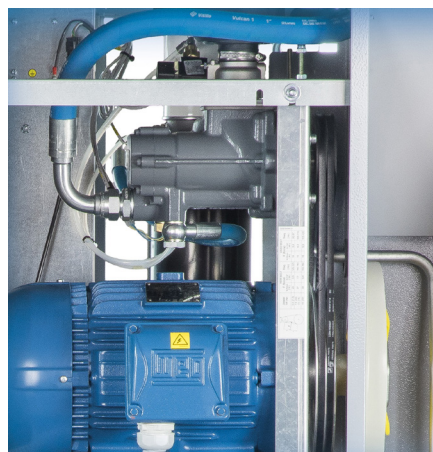
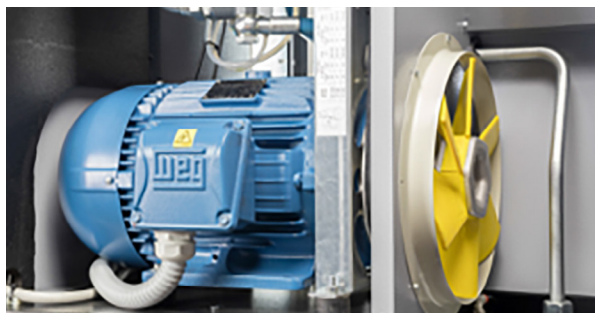
Smart technical advantages

A complete solution

- Save space and money with tank mounted installations including dryer and filters.
- The complete solution not only saves costs on installation, but also reduces the risk of air leakages in your workshop.

Total reliability

- Built for 100% continuous duty cycle.
- The complete unit is designed to operate at ambient temperatures up to 46° C/ 115° F.
- An oversized ventilation ensures low internal temperatures, making your compressor live better and longer.



Robust and efficient compressor elements

- A new generation of compressor elements, provides top performance allied to low energy consumption and a very long lifetime for your investment.

High quality air delivery

- Units built on an air receiver can be equipped with a air treatment package composed by a refrigerant dryer, pre filter.
- This air treatment package guarantees dry and very clean air, perfect for the most demanding applications.





Intuitive remote control

The ES4000 connect controller makes your compressor easier to operate, more reliable and more cost-efficient. And thanks to its automatic software updates, your compressor will even get better over time.

- **Easy-to-use display**
- **Connectivity for remote monitoring and control**
- **DSS advanced energy savings**
- **Real-time warnings and shutdown alarms**
- **Service status, history and notifications**
- **Leakage detection**
- **Easy pressure band settings via the ICONS app**
- **Over-the-air software updates**

Technical specifications

Model	Max. working pressure	Reference working pressure	Free Air Delivery @ reference conditions*			Motor power		Noise level **	Weight			
									Base-mounted	Tank-mounted 270L.	Tank-mounted 270L. + dryer	Tank-mounted 270L + dryer + Filter
									kg			
	Bar	Bar	m³/h	l/s	cfm	kW	hp	db(A)				
MSM 5.5	8	7.5	50,8	14,1	29,9	5,5	7,5	64	160	207	242	247
	10	9.5	41,8	11,6	24,6							
MSM 7.5	8	7.5	68,4	19,0	40,3	7,5	10	65	170	217	250	255
	10	9.5	59,8	16,6	35,2							
	13	12.5	46,8	13,0	27,5							
MSM 11	8	7.5	97,2	27,0	57,2	11	15	69	185	232	265	270
	10	9.5	85,0	23,6	50,0							
	13	12.5	69,1	19,2	40,7							
MSM 15	8	7.5	111,6	31,0	65,7	15	20	71	200	247	280	285
	10	9.5	100,8	28,0	59,3							
	13	12.5	79,9	22,2	47,0							

* Unit performance measured according to ISO 1217, Annex C, latest edition

** Noise level measured according to ISO 2151:2004 using ISO 9614/2

500L Tank mounted variants. Weight = 50kg extra.

All Air Outlet Connections = G 3/4

DIMENSIONS

Model	Length	Width*	Height
Base-mounted	850	720	980
Tank-mounted 200 L.	1543	720	1337
Tank-mounted 500 L.	1945	720	1468

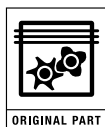




Contact your local representative:

www.mark-compressors.com

6999200410



CARE

Care is what service is all about: professional service by knowledgeable people, using high-quality original parts.

TRUST

Trust is earned by delivering on our promises of reliable, uninterrupted performance and long equipment lifetime.

EFFICIENCY

Equipment efficiency is ensured by regular maintenance. Efficiency of the service organization is how Original Parts and Service make the difference.